

Technical Data for P-Series Pressure Gauges



Alicat's P-Series pressure gauges accurately and rapidly measure the absolute pressure, gauge pressure or differential pressure of process gases and liquids.

Tel: 888-290-6060
www.alicat.com/pressure

Standard Specifications (Contact Alicat for available options.)

Performance	P-Series Gauges
Full scale pressure < 2" H2O Accuracy	Consult Factory
Full scale pressure ≥ 2" H2O Standard Accuracy	± 0.25%
Full scale pressure ≥ 2" H2O High Accuracy Option	± 0.125%
Repeatability	± 0.08% Full Scale
Zero Shift and Span Shift	0.02% Full Scale / °Celsius
Operating Range / Turndown Ratio	0.5% to 100% Full Scale / 200:1 Turndown
Excess Pressure	128% FS Measurable
Burst Pressure	3 X Full Scale
Typical Response Time ¹	5 ms (Adjustable)
Warm-up Time	< 1 Second

1. Volumes, feed pressures, exhaust pressures and line sizing will determine the limits of response times.

Operating Conditions	P-Series Gauges
Gas Compatibility	Compatible with all non-corrosive gases ¹
Operating Temperature	-10 to +60 °Celsius
Common Mode Pressure (Differential Pressure Units Only)	200 psig
Mounting Attitude Sensitivity	None
Ingress Protection	IP40
Wetted Materials	302 & 303 Stainless Steel, Viton®, Silicone RTV, Silicon, Glass. If your application demands a different material, please contact Alicat.

1. For aggressive gases, please see our PS-Series pressure Gauges. For use with water or other liquids please contact Alicat

Communication / Power	P-Series Gauges
Monochrome LCD or Color TFT Display with integrated touchpad	Displays Pressure
Digital Output Signal ¹ Options	RS-232 Serial / RS-485 Serial / Modbus / PROFIBUS ³
Analog Output Signal ² Options	0-5 Vdc / 1-5 Vdc / 0-10 Vdc / 4-20 mA
Optional Secondary Analog Output Signal ²	0-5 Vdc / 1-5 Vdc / 0-10 Vdc / 4-20 mA
Electrical Connection Options	8 Pin Mini-DIN / 9-pin D-sub (DB9) / 15-pin D-sub (DB15) / 6 pin locking
Supply Voltage	7-30 Vdc (15-30 Vdc for 4-20 mA outputs)
Supply Current	0.040 Amp

1. The **Digital Output Signal** communicates Pressure
 2. The **Analog Output Signal** and **Optional Secondary Analog Output Signal** communicate Pressure
 3. If selecting **PROFIBUS**, no analog signal is available. PROFIBUS units do not have the display. See PROFIBUS specifications for PROFIBUS supply voltages and currents. (www.alicat.com/profibus)

Mechanical Specifications

Pressure Product	Mechanical Dimensions	Process Connections ¹
P Series Gauges	4.1"H x 2.4"W x 1.1"D	1/8" NPT Female

1. Compatible with Beswick®, Swagelok® tube, Parker®, face seal, push connect and compression adapter fittings. VCR and SAE connections upon request.

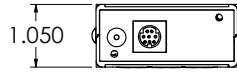
Standard Available Ranges

P-Series Gauges		
-15 psig to 0 psig		
2 inH ₂ OD	2 inH ₂ OG	
4 inH ₂ OD	4 inH ₂ OG	
1 psid	1 psig	
5 psid	5 psig	
15 psid	15 psig	15 psia
30 psid	30 psig	30 psia
100 psid	100 psig	100 psia
150 psid	300 psig	300 psia
	500 psig	500 psia

Other ranges available. Please contact Alicat.

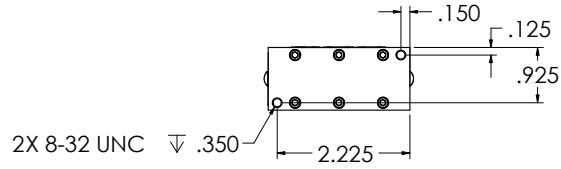
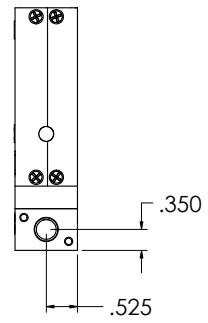
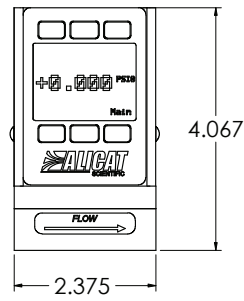
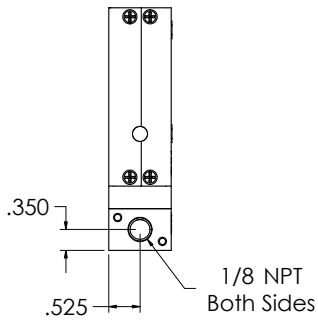
Select One Unit of Measure when Ordering		
PSIA	inHG	Atm
PSIG	inH ₂ O	Torr
mmHG	mBar	kPa

P-Series
All standard ranges



Tel: 888-290-6060

www.alicat.com/pressure



P-Series
Differential Pressure
All standard ranges

